



Zoning Resolution

THE CITY OF NEW YORK

Eric Adams, Mayor

CITY PLANNING COMMISSION

Daniel R. Garodnick, Chair

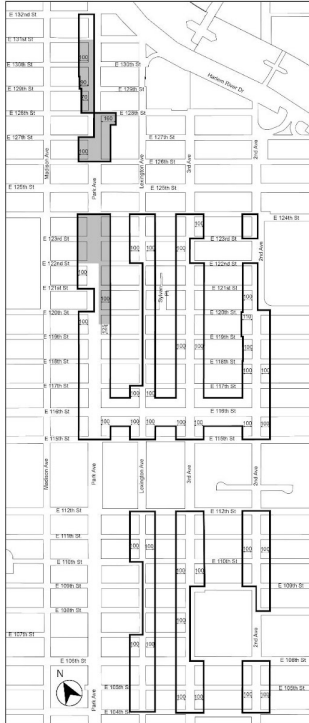
Appendix

File generated by <https://zr.planning.nyc.gov> on 1/27/2023

Appendix - SPECIAL EAST HARLEM CORRIDORS DISTRICT PLAN

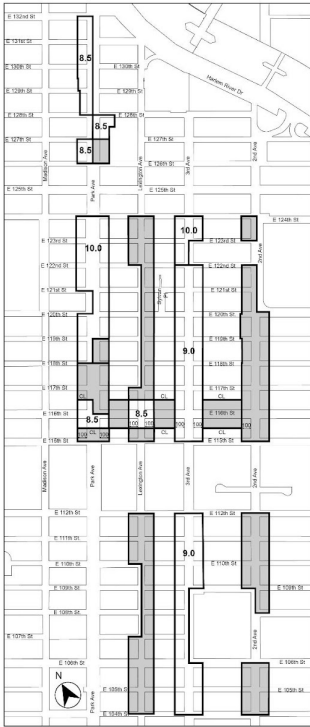
LAST AMENDED 11/30/2017

Map 1: Special East Harlem Corridors District and Subdistrict (11/30/17)



EAST HARLEM DISTRICT PLAN
SPECIAL EAST HARLEM CORRIDOR DISTRICT AND SUBDISTRICT
Special East Harlem Corridors District
Park Avenue Subdistrict

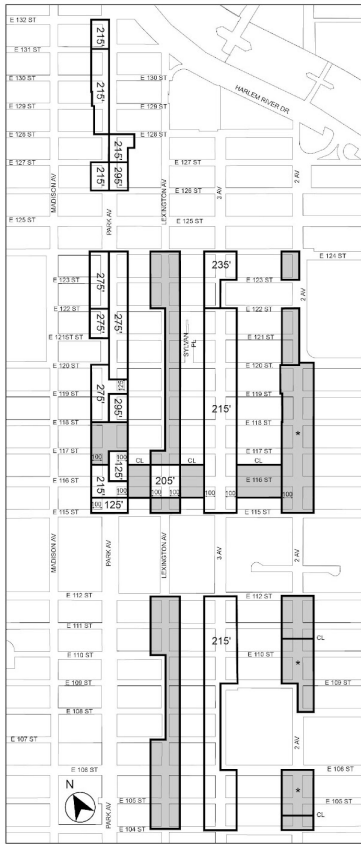
Map 2: Maximum Residential Floor Area Ratio (11/30/17)



EAST HARLEM DISTRICT PLAN
MAP 2: MAXIMUM RESIDENTIAL FAR

Underlying FAR Applies

Map 3: Maximum Height (5/29/19)



EAST HARLEM DISTRICT PLAN

MAP 3. MAXIMUM HEIGHT

• Subject to Section 138-23(b)(3)(ii)

■ Underlying Maximum Height Applies

