



Zoning Resolution

THE CITY OF NEW YORK

Eric Adams, Mayor

CITY PLANNING COMMISSION

Daniel R. Garodnick, Chair

Appendix A

File generated by <https://zr.planning.nyc.gov> on 2/3/2025

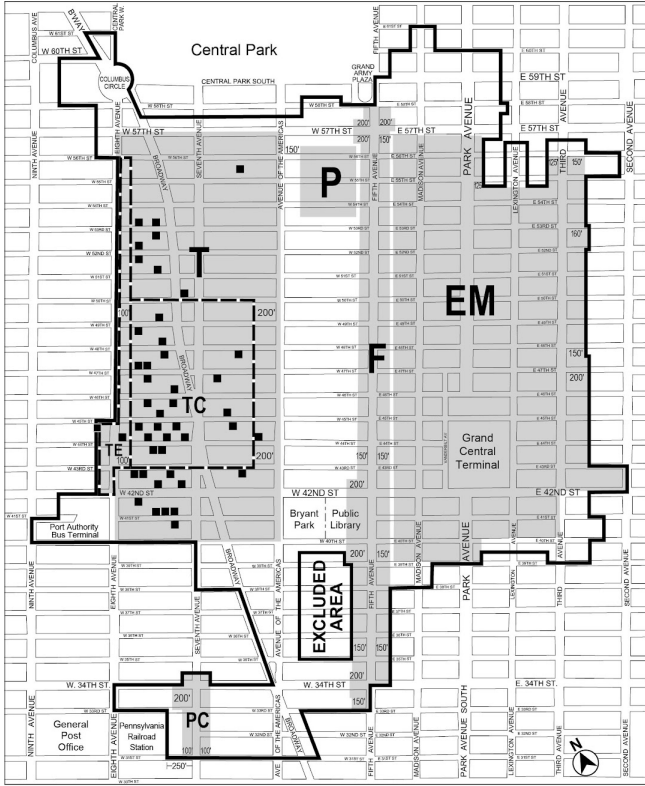
Appendix A - Midtown District Plan Maps

LAST AMENDED

8/9/2017

(8/9/17)

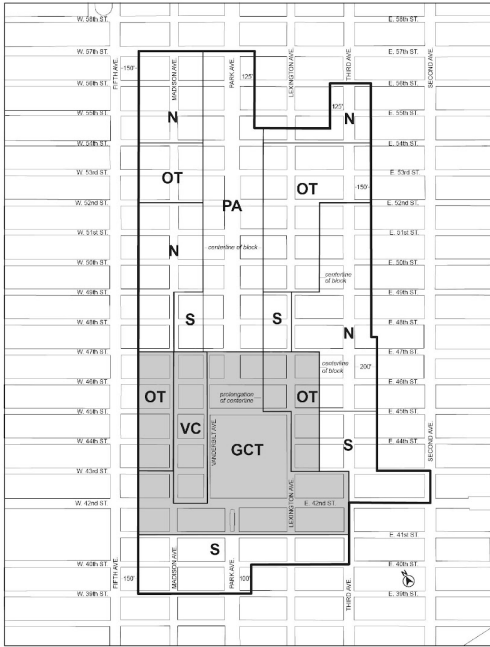
Map 1: Special Midtown District and Subdistricts (81-A1)



- | | |
|------------------------------------|--|
| F Fifth Avenue Subdistrict | TC Theater Subdistrict Core |
| EM East Midtown Subdistrict | TE Theater Subdistrict Eighth Avenue Corridor |
| PC Penn Center Subdistrict | ■ Listed Theaters |
| P Preservation Subdistrict | — Special Midtown District |
| T Theater Subdistrict | |

(8/9/17)

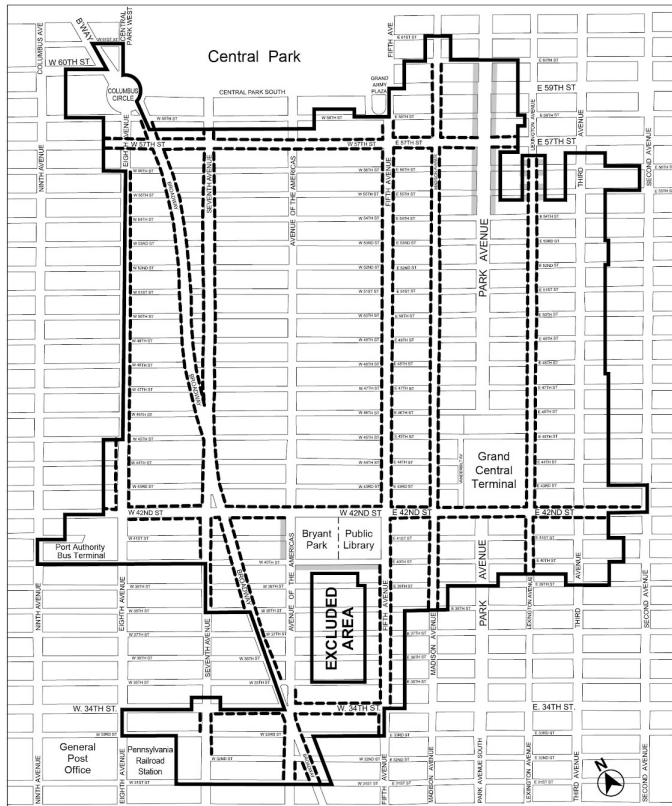
Map 2: Special East Midtown Subdistrict and Subareas (81-A2)



- East Midtown Subdistrict
- Grand Central Zone Area
- GCT - Grand Central Transit Improvement Zone Subarea
- N - Northern Subarea
- OT - Other Transit Improvement Zone Subarea
- PA - Park Avenue Subarea
- S - Southern Subarea
- VC - Vanderbilt Corridor

(8/9/17)

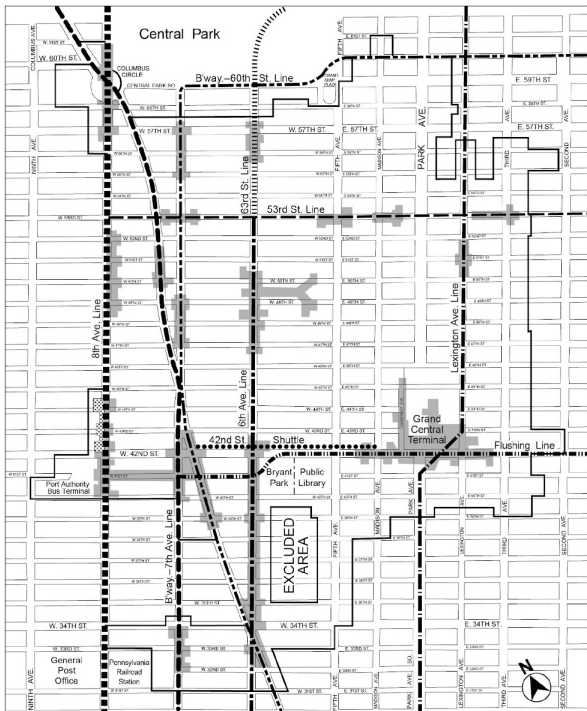
Map 3: Retail and Street Wall Continuity (81-A3)



- Special Midtown District
- - - Retail and Street Wall Continuity required
- Only Street Wall Continuity required

(8/9/17)

Map 4: Subway Station and Rail Mass Transit Facility Improvement Areas (81-A4)



- Special Midtown District
- Improvement Area
- ▨ Improvement Area (Subway station improvement bonus pursuant to Section 81-292 not applicable)
- 8th Ave. Line
- Broadway-7th Ave. Line
- Broadway-60th St. Line
- 6th Ave. Line
- Lexington Ave. Line
- 63rd St. Line
- 53rd St. Line
- 42nd St. Shuttle
- Flushing Line

