



## Zoning Resolution

THE CITY OF NEW YORK

Eric Adams, Mayor

CITY PLANNING COMMISSION

Daniel R. Garodnick, Chair

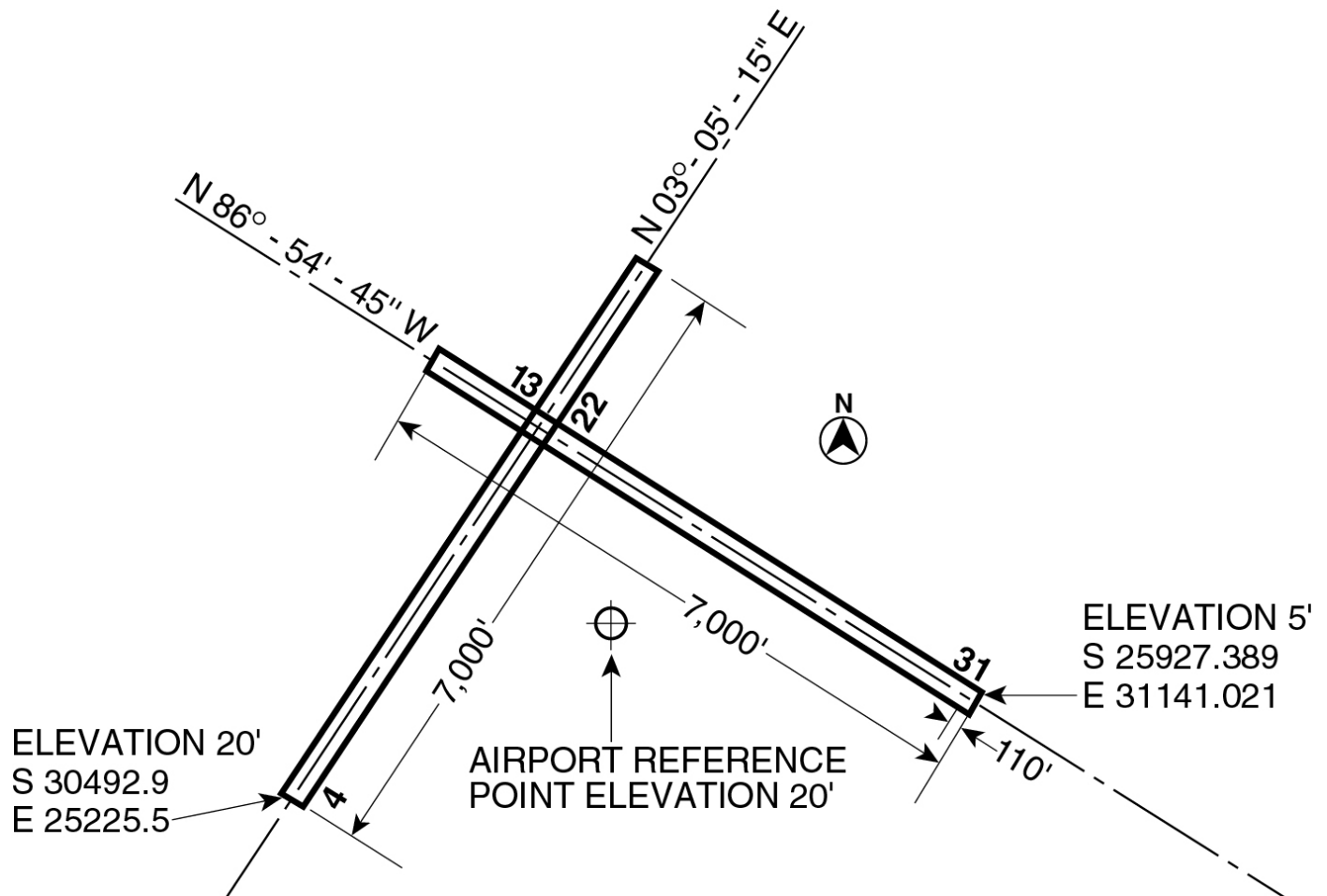
# **61-42 - Runways for Major Airports**

File generated by <https://zr.planning.nyc.gov> on 5/20/2024

## 61-42 - Runways for Major Airports

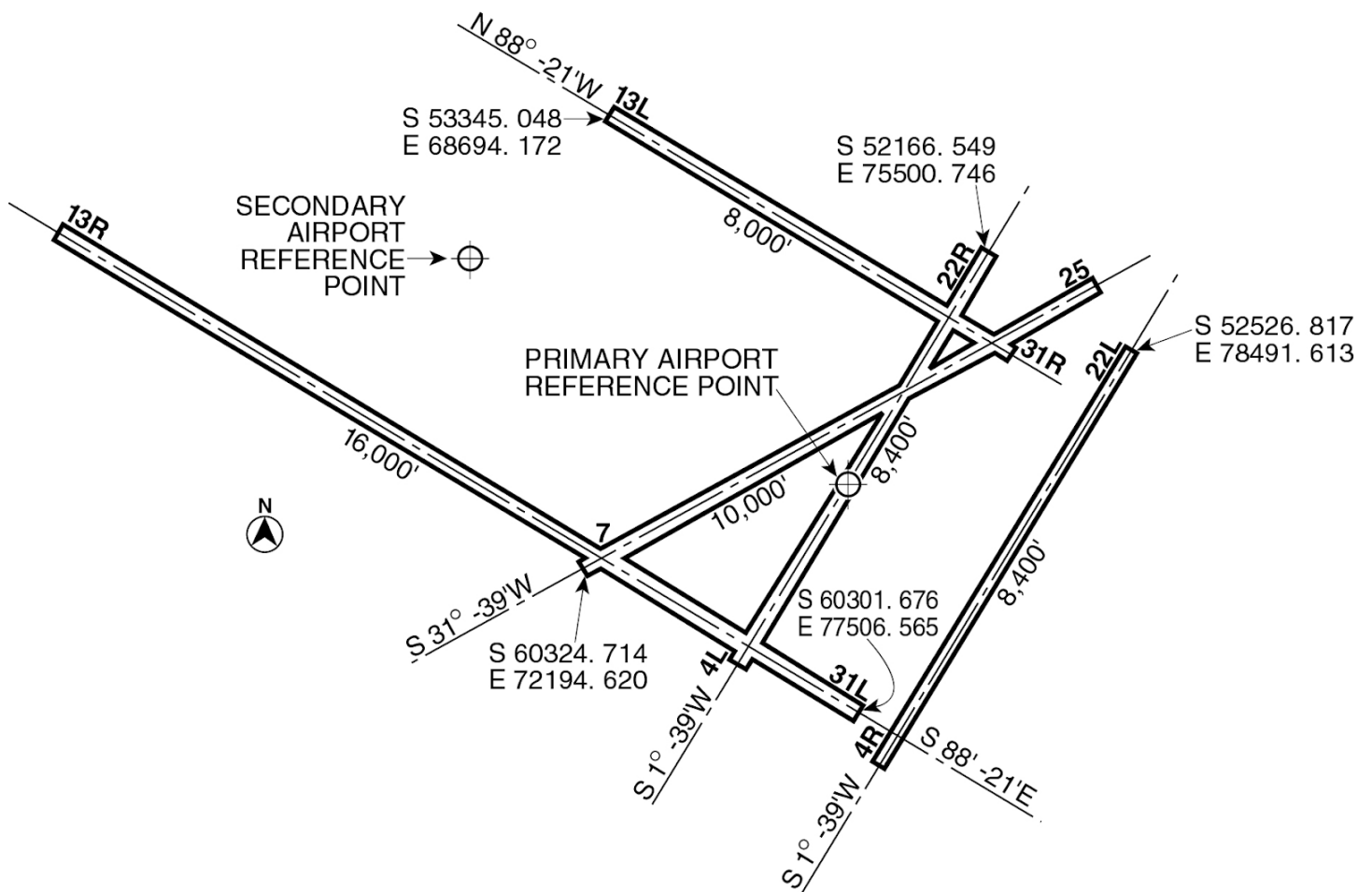
LAST AMENDED  
10/25/1993

The runways for each such major airport shall be the runways set forth in the following diagrams:



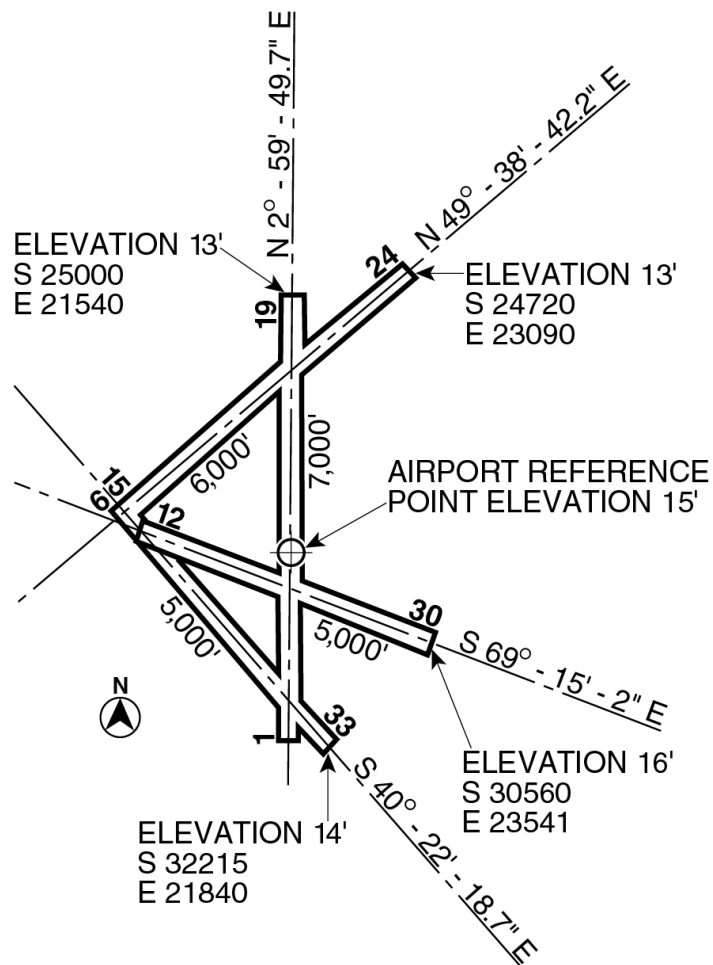
LaGUARDIA AIRPORT

Note: Coordinates shown refer to the U.S. coast and geodetic 10th Avenue base line. Elevations are above mean sea level.



# J. F. KENNEDY INTERNATIONAL AIRPORT

Note: Coordinates shown refer to the U.S. coast and geodetic 10th Avenue base line. Elevations are above mean sea level.



U. S. NAVAL AIR STATION

(FLOYD BENNETT FIELD)

Note: Coordinates shown refer to the U.S. coast and geodetic 10th Avenue base line. Elevations are above mean sea level.